



Kingsholm Square

, Gloucester, GL1 2QJ

£4,200 Per Calendar Month



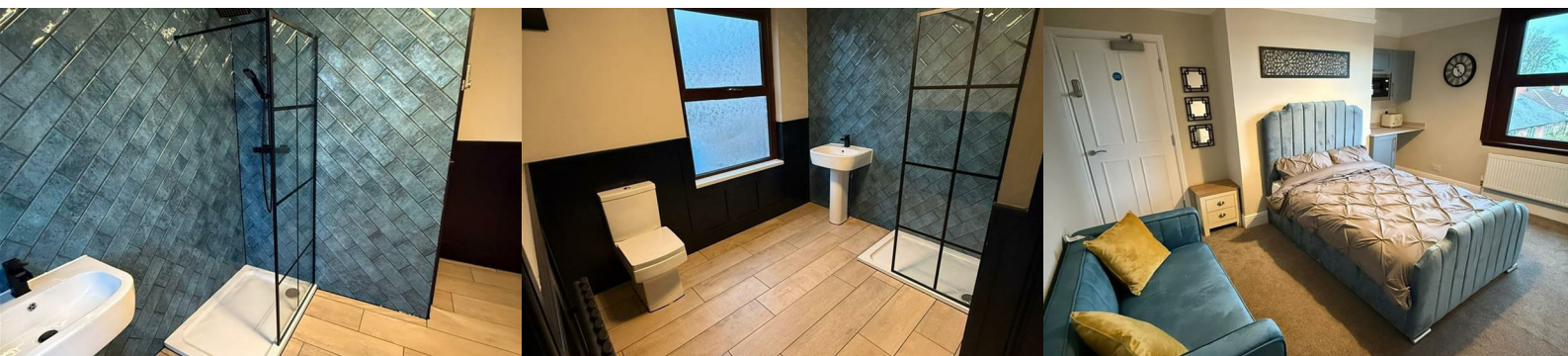
****Coming Soon****

With five spacious double bedrooms, this property is perfect for families or those seeking ample space. The three bathrooms, including two en-suites, provide convenience and comfort for all residents.

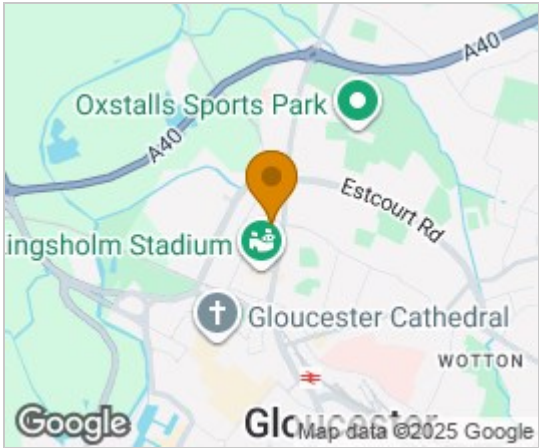
The house has been fully renovated, ensuring modern amenities and stylish finishes throughout. This attention to detail makes it an ideal choice for a care company looking for a well-equipped and welcoming environment.

Available from January, this property presents a fantastic opportunity to secure a home in a desirable location.

Do not miss the chance to make this stunning property your own.



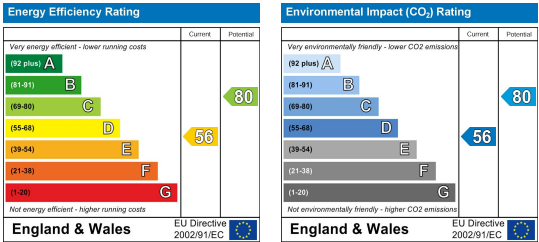
Area Map



Floor Plans



Energy Efficiency Graph



These particulars, whilst believed to be accurate are set out as a general outline only for guidance and do not constitute any part of an offer or contract. Intending purchasers should not rely on them as statements of representation of fact, but must satisfy themselves by inspection or otherwise as to their accuracy. No person in this firms employment has the authority to make or give any representation or warranty in respect of the property.